



Public Programs...Personal Service

**Methane Monitoring Report – WRL
Fourth Quarter, 2020**

**Cochise County Western Regional Landfill
2595 N. Sagebrush Road
Huachuca City, Arizona 85616**

December 2020

Martin D, Haverty
Director

Telephone: (520) 803-3770
Fax: (520) 803-3798



COCHISE COUNTY
Department of Solid Waste
2595 North Sagebrush Road
Huachuca City, Arizona 85616

December 21, 2020

Tracy K. Neal
Manger
Solid Waste Unit
Arizona Department of Environmental Quality
1110 W Washington Street
Phoenix, AZ 85007

Subject: Fourth Quarter 2020 Methane Monitoring Cochise County Western Regional Landfill (WRL)

Dear Tracy K. Neal:

Cochise County Solid Waste Department (CCSWD) is pleased to present the results of the Fourth Quarter 2020 Methane monitoring event conducted on December 17, 2020 at the Western Regional Landfill. The measurements in the monitoring probes were below regulatory limits for the facility. These results have been placed in the Facility Operating Record.

Please do not hesitate to call me at 469-286-5353, or Jason Faccio, Operations Superintendent at 520-803-3787, if you have any questions.

Sincerely,

A handwritten signature in blue ink that reads "Mohd Rashidul Hasan".

Mohd R. Hasan "Hasan" MS. Envrn. Engineering
Registered Environmental Professional (REP)
Environmental Compliance Coordinator.



Cochise County Western Regional Landfill
Fourth Quarter 2020
Methane Monitoring Record

DATE: 12/17/2020

MONITORING EQUIPMENT USED: Landtech GA – 90

MONITORING CONDUCTED BY: Westley Stanford, Operations Supervisor

LANDFILL LOCATION: 2595 N Sagebrush Road, Huachuca City, AZ 85616

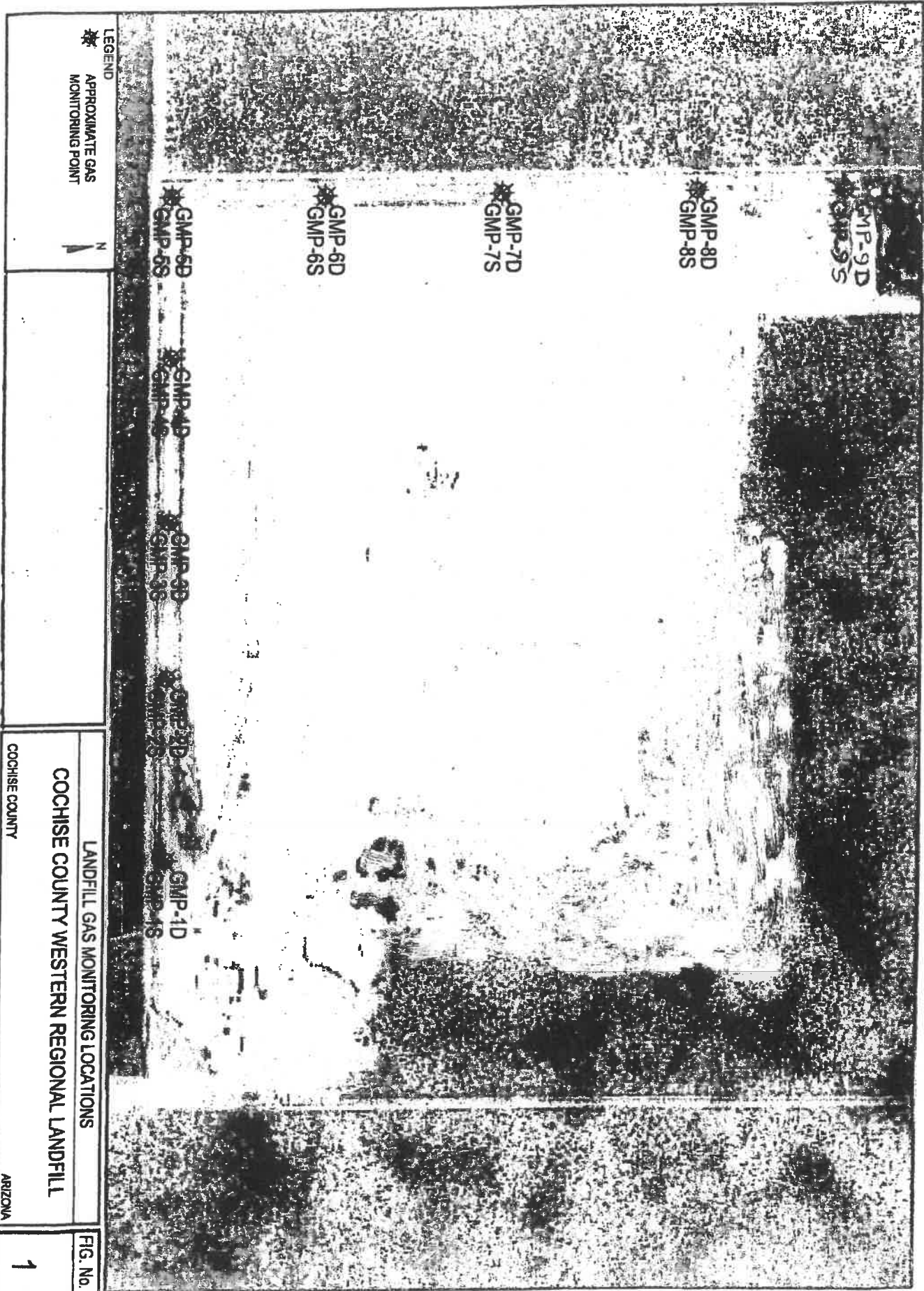
WEATHER CONDITIONS (General): Sunny, approximately 60° F

Monitoring Point	Performance Criteria	*% Methane by Vol. of Air	% LEL Methane	% Oxygen	Time (PM)	Comments
GMP-1S	100% LEL	0	0	20.0	12:12	
GMP-1D	100% LEL	0	0	19.8	12:13	
GMP-2S	100% LEL	0	0	20.0	12:17	
GMP-2D	100% LEL	0	0	19.5	12:18	
GMP-3S	100% LEL	0	0	19.5	12:20	
GMP-3D	100% LEL	0	0	19.1	12:21	
GMP-4S	100% LEL	0.1	2	19.6	12:25	
GMP-4D	100% LEL	0.1	2	19.9	12:26	
GMP-5S	100% LEL	0.1	2	18.9	12:30	
GMP-5D	100% LEL	0.1	2	19.5	12:31	
GMP-6S	100% LEL	0.1	2	19.6	12:35	
GMP-6D	100% LEL	0	0	19.1	12:36	
GMP-7S	100% LEL	0	0	19.8	12:44	
GMP-7D	100% LEL	0	0	19.8	12:45	
GMP-8S	100% LEL	0.1	2	20.2	12:48	
GMP-8D	100% LEL	0.1	2	20.2	12:50	
GMP-9S	100% LEL	0	0	19.7	12:53	
GMP-9D	100% LEL	0	0	19.0	12:54	

* 5% Methane by Volume of Air is equal to 100% LEL

Values in BOLD exceed Lower Explosive Limit (LEL)

S = Well depth of 18 ft bgs; D = Well depth of 38 ft. bgs



LEGEND
 * APPROXIMATE GAS MONITORING POINT



LANDFILL GAS MONITORING LOCATIONS
 COCHISE COUNTY WESTERN REGIONAL LANDFILL
 COCHISE COUNTY
 ARIZONA

FIG. No.

1

